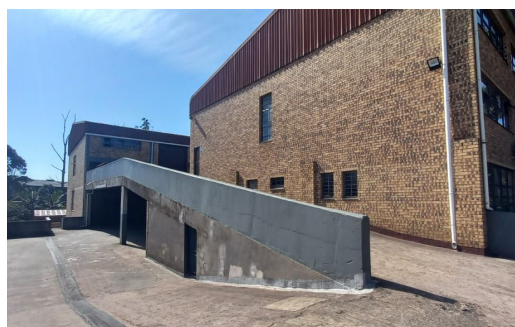


NEW LISTING



Floor Size
Zoning
Rates
Levies

378m²
Industrial
R8,854.3pm
R7,045.6pm

R2,551,500

378m² mini industrial unit for sale in central Pinetown

Maxprop is proud to present this 378m² mini-industrial unit for sale, in a secure park in central Pinetown. This is perfect for an investor as the unit is currently tenanted until July 2024.

Situated in the well-established industrial node of Pinetown, less than 1 kilometer from the M19 and 1.5 kilometers from the M13, Devro Park is an existing multi storey, mini-unit industrial complex

Peter Kleynhans

Agent

074 071 0077

peter@maxprop.solutions



**MAX
PROP**

www.maxprop.co.za

WEB REF: CL1594