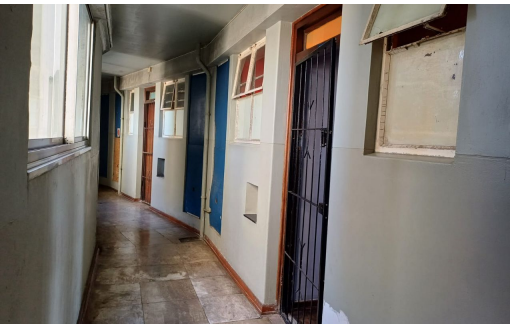


PRICE REDUCED



**R530,000**

Monthly Bond Repayments R5,470.60  
Calculated over 20 years at 11% with no deposit



Land Size	8,292m <sup>2</sup>
Floor Size	54m <sup>2</sup>
Property Title	Sectional Title
Rates	R320.00
Levies	R1,350.00
Security	Yes
Furnished	Yes
Pool	Yes
Pets Allowed	No

## One Bedroom Apartment

One bedroom unit for sale on Victoria Embankment .

A perfect start up or a great investment with current tenant who would like to stay on.  
This property offers a spacious one bedroom and a lounge currently used as another bedroom ,fitted kitchen and a bathroom.

Beautiful Harbour views

Call me today to book your viewing.

**Lincy Tigere**

Candidate Property Practitioner  
Registered with PPRA (FFC 1235633)

079 349 7009

[lincyt@maxprop.solutions](mailto:lincyt@maxprop.solutions)



**MAX  
PROP**

[www.maxprop.co.za](http://www.maxprop.co.za)

WEB REF: RL5391